



A MEMBER OF THE
HILGER&KERN GROUP

eldomix 100 / 600

FOR THE PROCESSING OF
LOW TO HIGH VISCOSITY
MATERIALS



High process security

Application areas

- Coating
- Sealing
- Gluing
- Encapsulating
- Rapid-Prototyping

Function

Pressure vessels are used to supply the material into the three phase asynchronous motor driven gear pumps where they are proportioned at the pre-selected ratio. Each gear pump is protected against over pressure as standard. The eldomix is fitted with a metering computer with touch screen terminal and a static mixing system that includes a 2K valve combined with a disposable static mixer. Should mixed material be allowed to cure in the mixer, it can be replaced simply and inexpensively, thus avoiding a time consuming, expensive and environmentally damaging flushing cycle.

Industries

These modern metering systems can be used in any industry where materials need to be applied in a high precision and repeatable way.

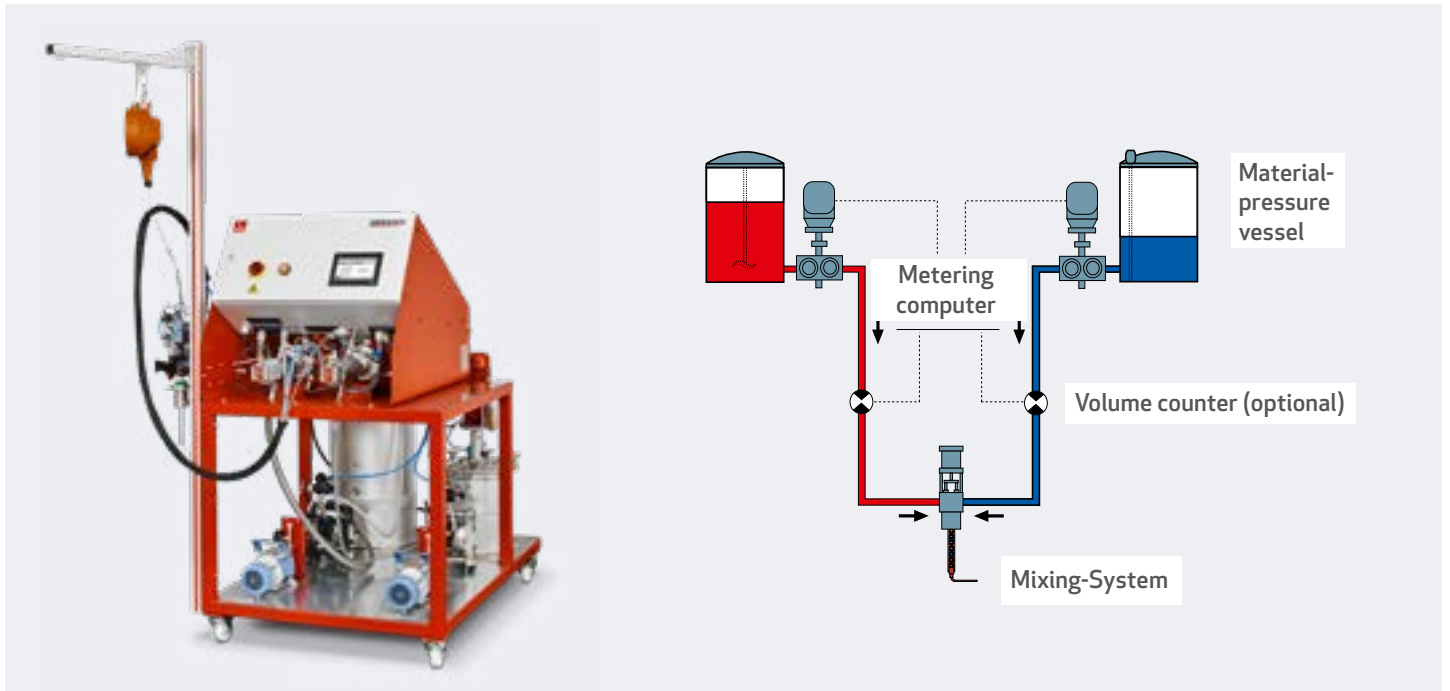
- Automotive
- Electrical and electronic
- Renewable energy
- Aerospace
- White goods
- and many more

Features and benefits

- Variable mixing ratio
- Variable output rate
- Compact bench top machine (eldomix 100)
- Simple operation
- Shot dispensing or continuous flow
- Over/under pressure protection
- Solvent free



eldomix 100



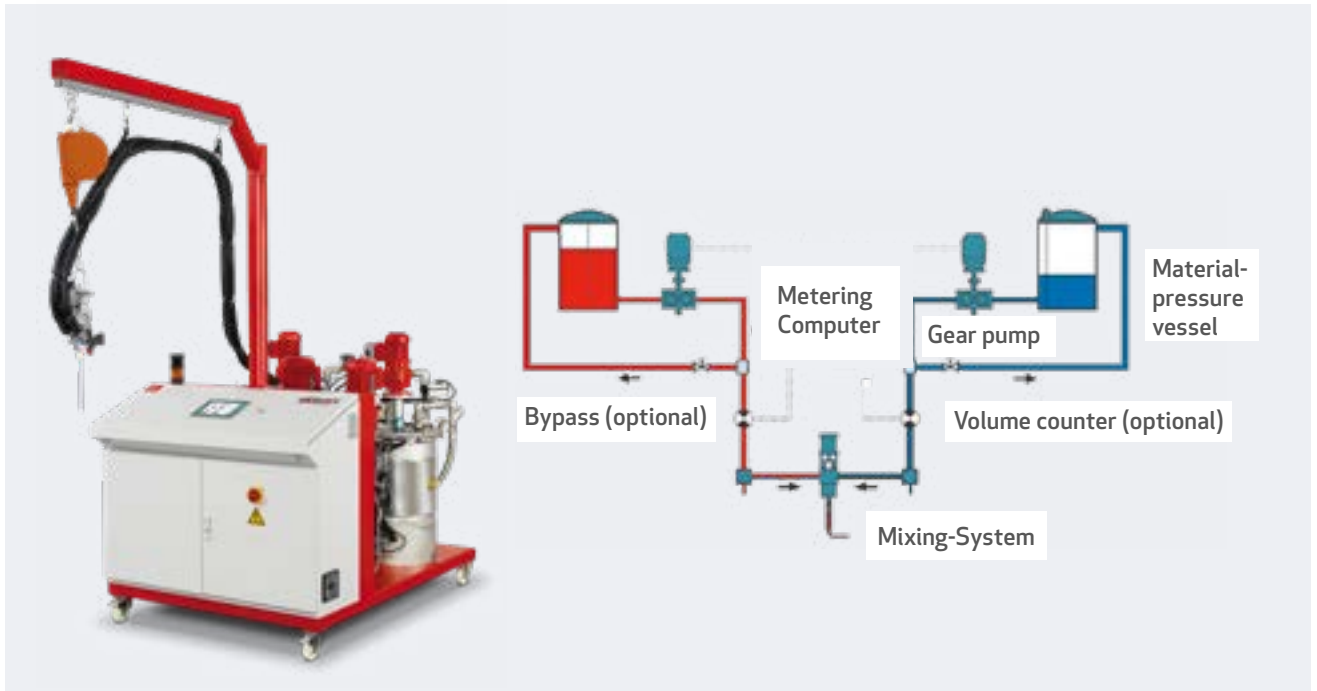
The eldomix 100 is a solvent free gear metering and mixing system, used to handle low to medium viscosity multi component media such as epoxy resins, polyurethanes or

silicones with mixing ratios between 100:100 and 100:5. Special configurations to process high viscosity media are also available.

Flow rate	From 2 ml/min, depending on mixing ratio and viscosity
Mixing ratio	100 : 100 to 100 : 5, by volume
Maximum working pressure	Up to 200 bar, depending on material and discharge rate
Mixing system	Static or static-dynamic mixing system <ul style="list-style-type: none"> ▪ 2K valve ▪ Disposal static mixer
Material supply	Bench top version: Pressure vessels 4, 12 or 24 l Welded frame: Pressure vessels up to 45 l, larger on demand and / or drum pumps
Viscosity range	50 to 80,000 mPas, with pressure vessel max. 150,000 mPas, with drum pumps*
Material characteristics	Unfilled, filled, abrasive
Power supply	400/230 VAC 3/N/PE / 50/60 Hz
Required air supply	6 bar
Dimensions	Bench top version: from 810 x 790 x 1,000 mm Welded frame: from 1,000 x 1,740 x 1,610 mm
Weight	Bench top version: from 200 kg Welded frame: from 400 kg

* higher available on request, depending on rheological properties of material

eldomix 600



The eldomix 600 is a solvent free gear metering and mixing system, used to handle low to medium viscosity multi component media, such as epoxy resins, polyurethanes or

silicones. Special configurations to process high viscosity media are also available.

Flow rate	From 2 ml/min, depending on mixing ratio and viscosity
Mixing ratio	100 : 100 to 100 : 5, by volume
Maximum working pressure	Up to 200 bar, depending on material and discharge rate
Mixing system	<ul style="list-style-type: none"> Static or static dynamic mixing system ▪ 2K valve ▪ Disposal static mixer Dynamic mixing system
Material supply	Pressure vessels 12 to 90 l, larger on demand and / or drum pumps
Viscosity range	50 to 80,000 mPas, with pressure vessel max. 150,000 mPas, with drum pumps*
Material characteristics	Unfilled, filled, abrasive
Power supply	400/230 VAC 3/N/PE / 50/60 Hz
Required air supply	6 bar
Dimensions	From 1,200 x 1,150 x 1,400 mm
Weight	From 600 kg

* higher available on request, depending on rheological properties of material

Equipment

eldomjx 100

Standard

- Bench top version
- 12 l stainless steel pressure vessel
- Gear pump with overpressure-protection
- Three phase asynchronous motor
- Static mixing system
 - 2K valve
 - disposable static mixer
- Metering computer with realtime Multitasking Operating System (64 programs be stored as standard, including 32 programs via external selection)
- 7" colour touch screen terminal
- Correction curve for pump efficiency («mapping»)
- Wear detection of the pump («condition monitoring»)

Optional

- Welded frame on wheels
- Modular machine setup
- Extension arm with balancer
- Pressure vessel with
 - analog level control
 - agitator
 - automatic refilling
 - connection for vacuum pump
- Material supply by drum pumps
- Different sealing systems according to individual requirements
- Controlling or regulation of mixing ratio and output rate by volume counters
- Static-dynamic mixing system
 - with mixer element monitoring
- Start/stop trigger via handle grip or foot switch
- Manual or automatic circulation
- Regeneration position
- Heating

eldomjx 600

Standard

- Chassis with castors
- 12 l stainless steel pressure vessel
- Gear pump with overpressure-protection
- Three phase asynchronous motor
- Static mixing system
 - 2K valve
 - disposable static mixer
- Metering computer with realtime Multitasking Operating System (64 programs be stored as standard, including 32 programs via external selection)
- 7" colour touch screen terminal
- Correction curve for pump efficiency («mapping»)
- Wear detection of the pump («condition monitoring»)

Optional

- Larger mobile chassis, also with integrated retention pond
- Modular machine setup
- Extension arm with balancer
- Pressure vessel with
 - analog level control
 - agitator
 - automatic refilling
 - connection for vacuum pump
 - automatic vacuum degassing
- Material supply by drum pumps
- Different sealing systems according to individual requirements
- Driven by servo motors
- Controlling or regulation of mixing ratio and output rate through volume counters
- Static-dynamic mixing system
 - with mixer element monitoring
- Dynamic mixing system
- Start/stop trigger via handle grip or foot switch
- Manual or automatic circulation
- Regeneration position
- Heating or tempering



A MEMBER OF THE
HILGER&KERN GROUP

We are one of the world's most experienced manufacturers of high-quality metering technology. Wherever adhesives, resins, silicones or lubricants are metered and applied in industrial production, we offer reliable, precise solutions. We provide systems and components for highly automated production processes, including for the automotive, wind, household appliances and electrical industries, as well as for aviation.

DOPAG is part of the HILGER & KERN GROUP, a reliable supplier and a development and service partner to industrial companies in a variety of market segments for almost 100 years. The group employs around 350 people and has subsidiaries and distributors in more than 40 countries.



Global sales and service network

Find your local DOPAG contact



DOPAG Benelux

Bunnik
info@dopag.nl
www.dopag.nl

DOPAG China

Shanghai
office@dopag.cn
www.dopag.cn

DOPAG Eastern Europe

Prague
info@dopagcz.com
www.dopagcz.com

DOPAG France

Valence
contact@dopag.fr
www.dopag.fr

DOPAG Germany

Hilger u. Kern, Mannheim
info@dopag.de
www.dopag.de

DOPAG India

Bangalore
sales@dopag.in
www.dopag.in

DOPAG Italy

Alpignano (Turin)
info@dopag.it
www.dopag.it

DOPAG Korea

Seoul
info@dopag.co.kr
www.dopag.co.kr

DOPAG Mexico

Saltillo, Coahuila
sales@dopag.mx
www.dopag.mx

DOPAG Nordic

Göteborg
info@dopag-nordic.com
www.dopag-nordic.com

DOPAG Switzerland

Cham
info@dopag.ch
www.dopag.ch

DOPAG UK

Droitwich
uksales@dopag.com
www.dopag.co.uk

DOPAG USA

Erlanger, Kentucky
ussales@dopag.com
www.dopag.us

We're present in more than 40 countries. Find your local sales partner here:
www.dopag.com/contacts

